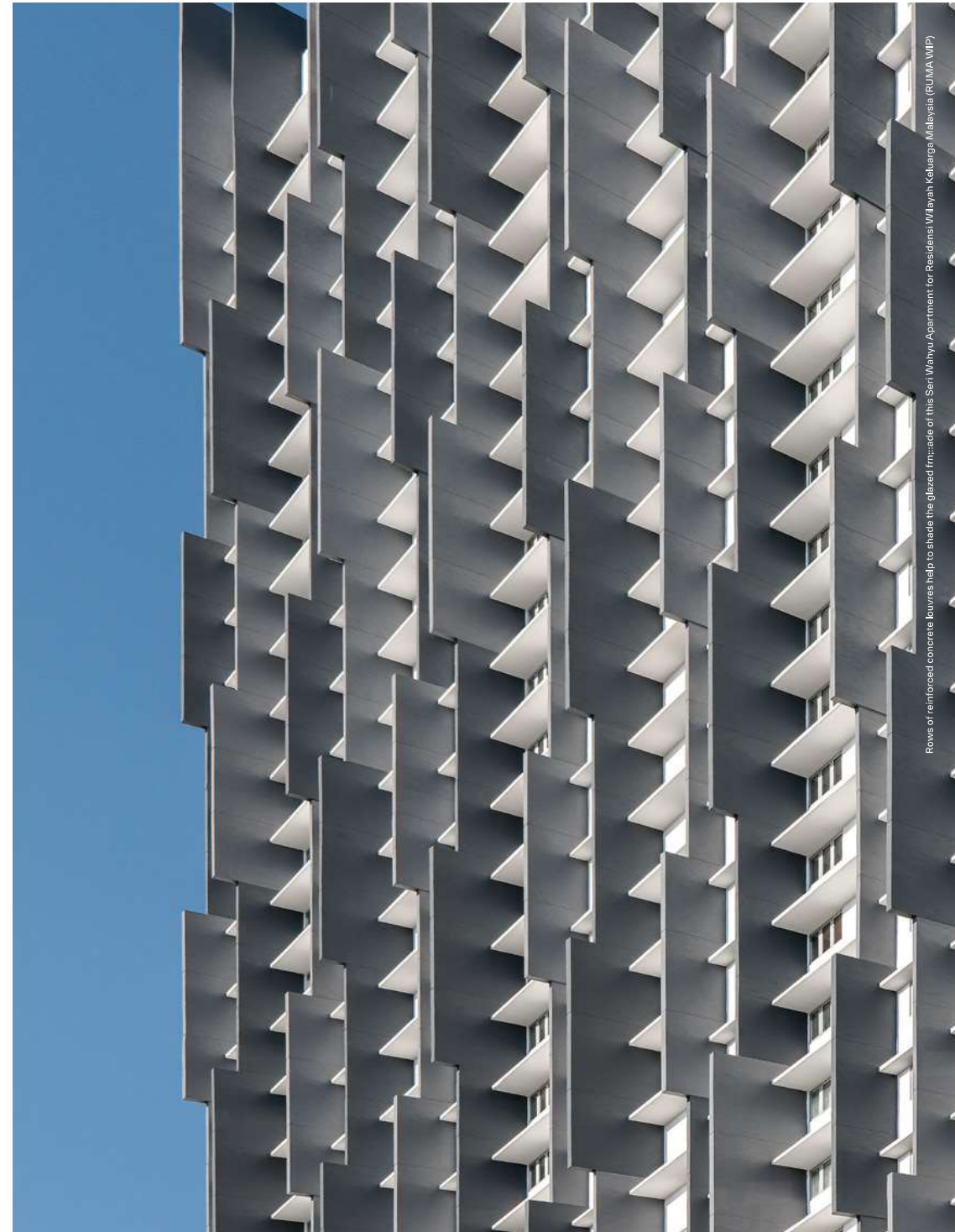


# BRIDGING FOR THE SKY

Linking the clouds with lake through architectonics  
Text by the architect



Rows of reinforced concrete balconies help to shade the glazed facade of this Seri Mahayu Apartment for Residents (Wijayah Kallarga, Malaysia) (RUJMA 01P)

Lakeville Residence is a commercial development comprising a mix of serviced apartments, apartment for Residensi Wilayah Keluarga Malaysia (RUMAWIP) and retail components, located at one of Kuala Lumpur's up and coming districts, Taman Wahyu, accessible via the Duta-Ulu Kelang Expressway, Middle Ring Road 2, Jalan Kepong and Jalan Ipoh. The development consists of six (6) towers of 38 and 42-storey serviced apartments with a total of 1,898 units in a variety of layouts, a 9-storey car park with a generous 1.25-hectare recreational park at its rooftop, 35-storey RUMAWIP with a total of 660 units with its independent recreational facilities and niche retail shops.

Lakeville Residence was developed by Enchanting Heights Sdn Bhd, a premier lifestyle developer, offers this invigorating life-work balance integrated development. In studying the location and site, several things stood out which had to be addressed - the surrounding ex-mining pond which has been utilised as a retention pond, the characteristic of low rise and low-density housing to the East and the bustling Jalan Kepong and Jalan Kuching to the South and East. The challenge would be to translate these into the brief and the overall planning and design are contextually relevant and building that are socially sensitive.

The final design is the result of intensive studies about tower placement, orientation and massing. Contemporary development demands necessitate height and density. Inspired by the lake, the façade of the building reflects the pattern of rippled water through rows of reinforced concrete fins that stretch throughout the building height and flicker in the breeze of the lake.



View from Jalan Sibul, the formal entrance to Lakeville Residence is beside the niche retail shops.



View from South West, 0.5km jogging belt and viewing decks by the lake, residents enjoy panoramic views of the lake, surrounding lush environments and bustling city views.

Inspired by the lake, the façade of the building reflects the pattern of rippled water through rows of reinforced concrete fins that stretch throughout the building height and flicker in the breeze of the lake.



View from South East, Lakeville Residence comprises serviced apartments, apartment for Residensi Wilayah Keluarga Malaysia (RUMAWIP) and niche retail shops.



Shady and double-volume chill-out lounge at Club House

Further keeping to the concept of the lake, the 4-storey link bridges that link each tower to the recreational podium are “skinned” with semi-transparent aluminium perforated panels of water ripple movement pattern. True to its name, the residential towers rise to a commanding height above the scenic surrounding lake. Its architectonics link the clouds with the nearby lake, and each tower is integrated with reinforced concrete “tapestry” flickering in the breeze of the lake.

The units range from 950 sqft to 1,200 sqft grouped around central cores. Each balcony or glazed opening has been designed to capture a “contained view” of the landscape and the apartments are configured in such a way that privacy is assured yet natural light, views and external spaces are optimised. Lakeville Residence includes one of KL’s largest recreational parks – a 1.25-hectare facility podium offering a treasure trove of facilities for family enjoyment; it has an air of relaxation and tranquillity.

The expansive recreational park is complemented by lush tropical landscaping to create visual focal points, serving as a unifying feature between the landscape and architecture. It also included a 0.5km jogging track that winds its way through the green environment. In addition to the jogging track, there is a Club House of faceted façade comprises of Multi-Purpose Hall, Gymnasium, sports and health facilities, 50m infinity swimming pool, wading pool, ecosystem pond, chill-out lounges, Hammock Garden, Sunken Plaza and so on. Residents can enjoy and appreciate the breeze and bustling view of the Kuala Lumpur cityscape.



Ceremonial entrance with leaning poles, portal with diagonal ceiling



Link bridge connecting residential towers to recreational facility podium



Ecosystem pond with lush tropical landscaping given the pristine environment



Juxtaposition between linear corridors and rows of reinforced concrete louvres at Seri Wahyu Apartment for Residensi Wilayah Keluarga Malaysia (RUMAWIP)

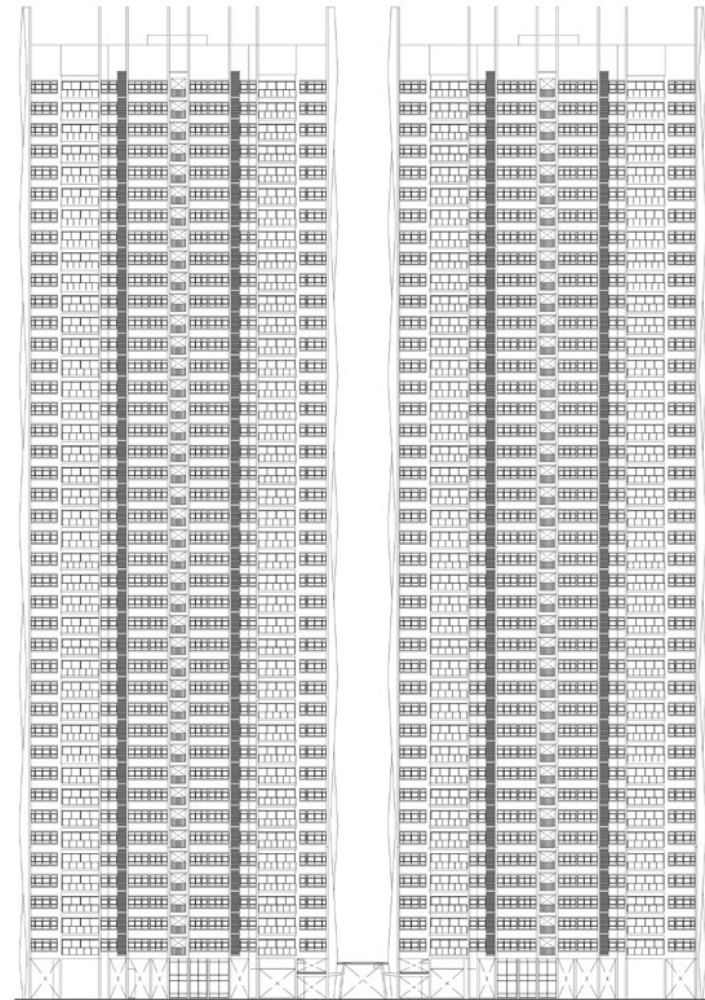


Lush curtain creepers dangling down into void space shades the carpark floors

Lakeville Residence includes one of KL's largest recreational parks – a 1.25-hectare facility podium offering a treasure trove of facilities for family enjoyment



50 metres length infinity pool overlooking lush tropical landscape and residential towers



Elevation Plan

LOCATION	Taman Wahyu, Kuala Lumpur
CLIENT	Enchanting Heights Sdn Bhd
PRINCIPAL USE	Residential
ARCHITECT	Architects 61 Sdn Bhd
PROJECT PRINCIPAL	Jeffrey Ling
PROJECT TEAM MEMBERS	Oscar Lee, Henry Kong, Joan Chia
DESIGN PERIOD	2013 - 2015
CONSTRUCTION PERIOD	66 months
DATE OF COMPLETION	September 2020
SITE AREA	61,000 sqm
FLOOR AREA	26,500 sqm
CONSTRUCTION COMPANY	Pembinaan Bintang Baru Sdn Bhd, China State Construction Engineering (M) Sdn Bhd
CIVIL ENGINEER	SNA Consult Sdn Bhd
M&E ENGINEER	East Orient Consult Sdn Bhd
QUANTITY SURVEYOR	Econocs Consultants Sdn Bhd
LANDSCAPING	HODA Design Sdn Bhd
INTERIOR CONSULTANT	Palladio Interiors Sdn Bhd
MAIN MATERIALS	Reinforced Concrete for building structures systems, silicate-based texture coating
PHOTOGRAPHER	David Yeaw